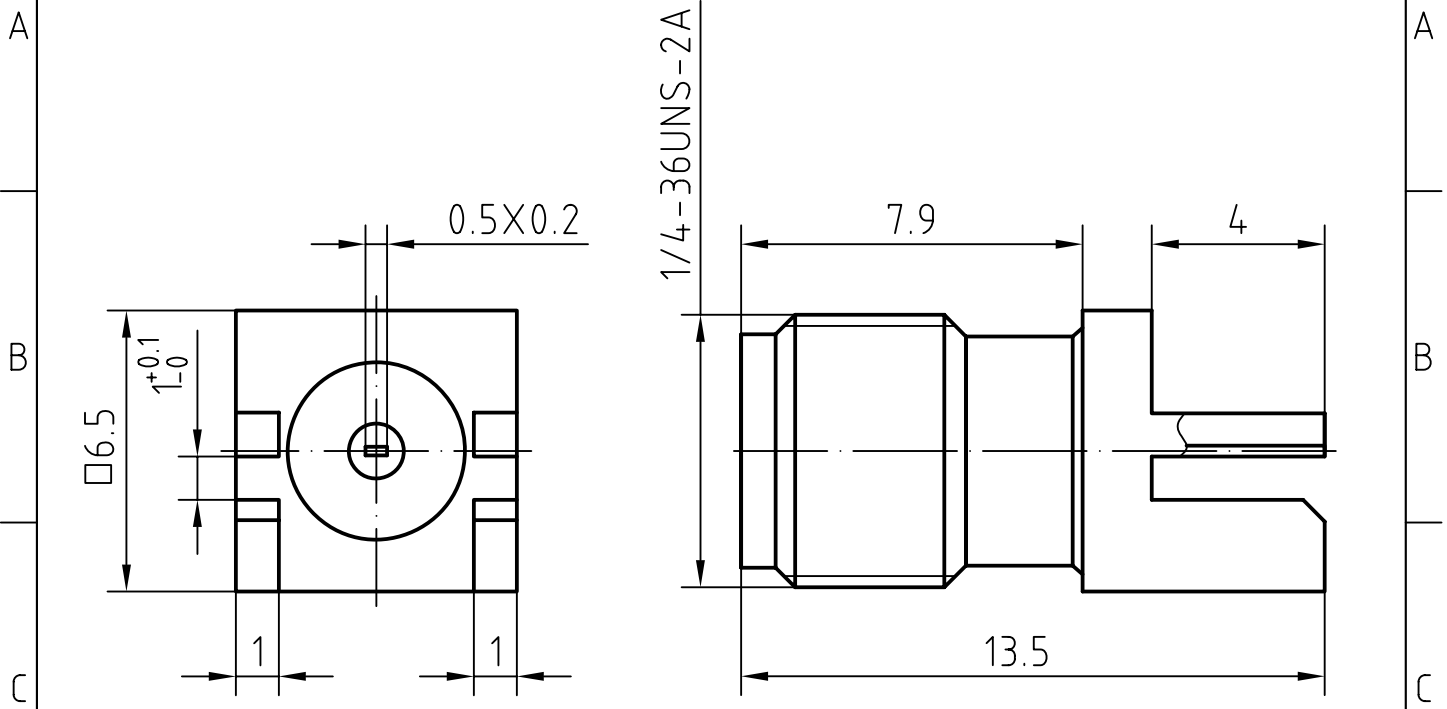
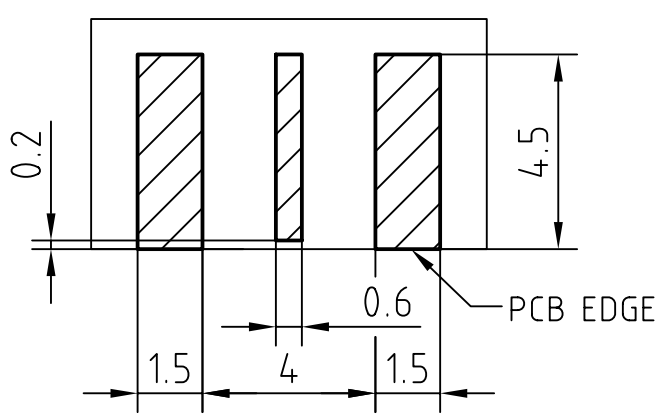


DRAWING



RECOMMENDED PCB LAYOUT



3	1	Body	Brass/Gold plated	Gold 0.2um over Nickel 2.0um
2	1	Insulator	PTFE	
1	1	Center contact	Beryllium copper/Gold plated	Gold 0.5um over Nickel 2.0um
Itemref	Quantity	Title/Name, designation, material, dimension etc		Article No./Reference

Designed by	Checked by	Approved by - date	File name	Date	Scale
-------------	------------	--------------------	-----------	------	-------

Amitron Electronics, Ltd.	SMA-KHD19A			
	http://www.amel.ru	Edition	Sheet	

CHARACTERISTICS

DESCRIPTION: SMA Type female connector edge mount

Electrical data:

<i>Impedance:</i>	50 ohm
<i>Frequency range:</i>	DC to 18.0 GHz
<i>VSWR:</i>	$\leq 1.04 + 0.02 \times f$ [GHz]
<i>Insertion loss:</i>	$\leq 0.08 \times \sqrt{f}$ [GHz] dB
<i>Insulation resistance:</i>	$\geq 5000 M\Omega$
<i>Test voltage:</i>	1000 V rms
<i>Working voltage:</i>	480 V rms
<i>Contact resistance:</i>	
1). Centre contact:	3.0 m Ω
2). Outer conductor:	2.0 m Ω
<i>Power handling (at 20 °C, sea level, VSWR 1.0) ≤ 200 W @ 2 GHz; ≤ 100 W @ 10 GHz</i>	
<i>RF-leakage</i>	≥ 100 dB up to 1 GHz

Environmental data:

<i>Temperature rating:</i>	-65° C to +165° C
<i>2002/95/EC (RoHS):</i>	Compliant

Mechanical data:

<i>Mating cycles:</i>	≥ 500
<i>Center contact captivation:</i>	≥ 15 N(axial)
<i>Coupling test torque:</i>	≤ 1.7 Nm
<i>Recommended torque:</i>	0.46 Nm to 0.69 Nm

Suitable cables:

N/A